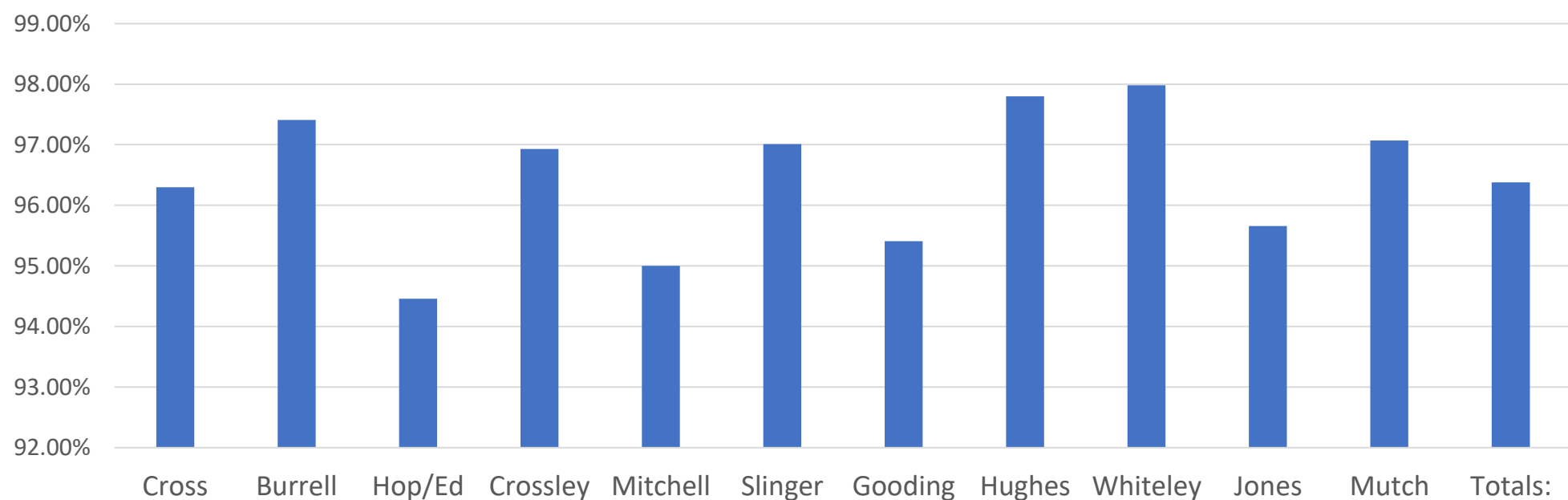




### Attendance Totals



## Stars of the Week

Class	Chosen by Teacher	
Mrs M	Amaya B	Rosie G
Mr Whiteley	Lennie H	Noah G



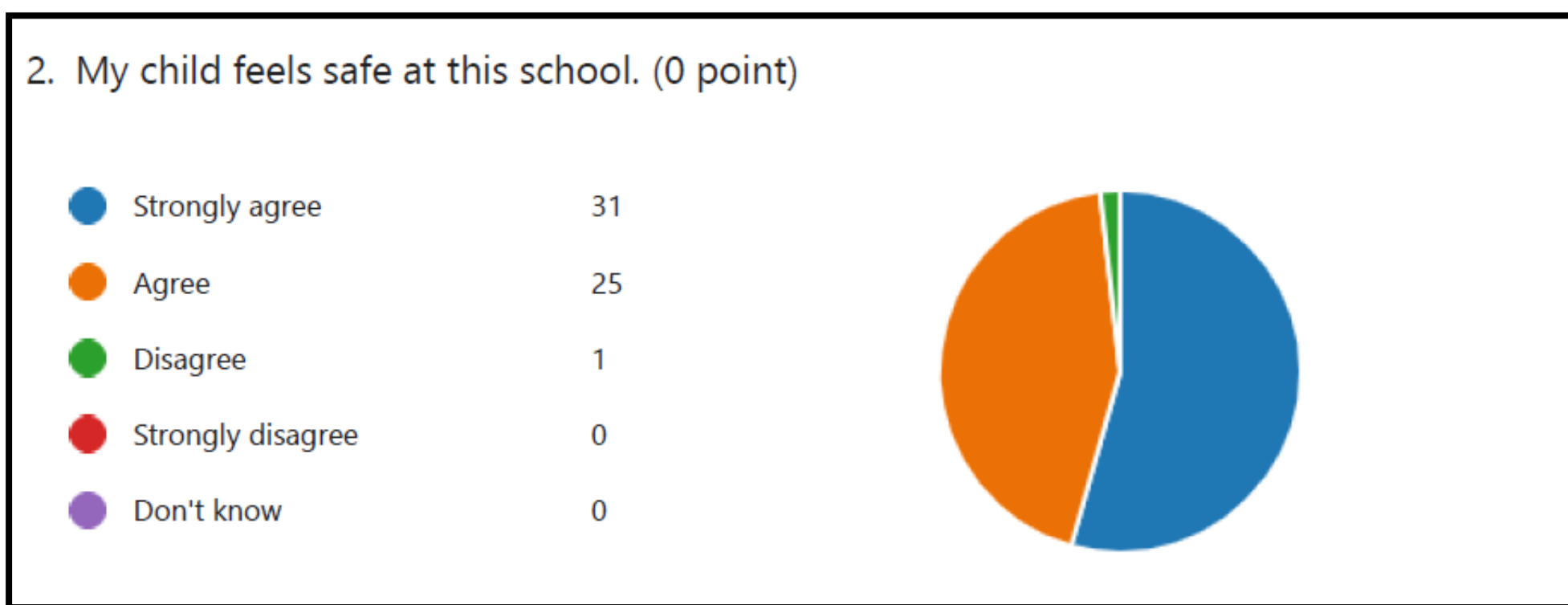
Class	Chosen by Teacher
Mrs A Mitchell	Paige P-Y
Miss Gooding	Evie S
Mrs Crossley	Willow B
Mrs Jones	Emily B
Mrs Cross	Freddy R
Mrs Hughes	Aaron G
Miss Mutch	Henry R
Mrs Slinger	Ingrid D
Mrs H & Mr E	Scarlett I



# Parent/Carer Surveys

The parent/carers responses have been analysed and shared with the governing body in our meeting on Wednesday. It is wonderful to hear so much positive feedback and I will discuss approaches to address constructive feedback in this newsletter too. We had 57 responses which is a reasonable amount. It would be more reflective of the whole school population if more families were to respond. Many people who are perfectly happy do not complete the survey but we want your views too. I know this survey was early in the academic year, but it had been over a year since the last one, so we were keen to get your views.

I will begin by celebrating the positive overviews and comments made:



This is a fantastic outcome. It is a ringing endorsement of the safeguarding improvements that have been made over the last three years. I would like to mention our expert safeguarding governor, Jo Burnside, because of the wealth of knowledge and support she has given the school. It's testament to the vigilance and care of all of our staff and it is a credit to you as families for working with us as partners to ensure pupils' safety.

### 1. My child is happy at this school. (0 point)

● Strongly agree	28
● Agree	26
● Disagree	1
● Strongly disagree	0
● Don't know	2



Again, this is a source of immense pride. We have continued to make huge strides in supporting pupils' social and emotional wellbeing and ensuring a holistic education that focuses on the whole child. This includes (but is not limited to):

- our excellent PSHE curriculum
- pastoral work through our learning mentor and Service Pupil Champions,
- access to green space and forest school
- having a relationship-based behavior policy
- Introducing trained mental health leads in school
- celebrating national days and weeks relating to pupil wellbeing

### 7. My child has SEND, and the school gives them the support they need to succeed

● Not applicable	43
● Strongly agree	7
● Agree	4
● Disagree	1
● Strongly disagree	0



The work Mr Edwards has done over the last three years has been enormous in its scope and has had a huge impact on pupils with SEND. You only need to look at the Key Stage Two progress for this group to see the effectiveness of his leadership actions. Mr Edwards is not one to sing his own praises, so I'll do it for him! Read the following document – the data speaks for itself:



14. I would recommend this school to another parent. (0 point)



Crucially, the overwhelming majority of you would recommend our school to others.

You followed this up with some very encouraging comments. **STAFF and TEACHERS** were again identified as a key strength of the school. I would echo this; our success is down to the work of everyone including teachers, support staff, leaders, governors, office staff, cleaners, kitchen staff, sports coaches and external agencies. Improvement only happens when we all pull together in the same direction.

*"My children are very happy at this school and pleased with choosing Applegarth school."*

*"Great support for parents as well as pupils. From reception to the head teacher, all staff are approachable and helpful."*

*"Overall it is a fantastic, well-run school with teachers and staff who are passionate about their role and my children have been very happy there so far."*

*"Absolutely amazing teachers. All my children love the school - best one in Northallerton by far."*

### 3. The school makes sure its pupils are well behaved. (0 point)

Strongly agree	18
Agree	29
Disagree	4
Strongly disagree	1
Don't know	5



Most people felt that behavior is good in school. We have moved to a new system of behavior management. This approach has a strong evidence base and is backed by current neuroscience, psychology and behavioural science. There were 63 fewer serious sanctions in the 2021-2022 academic year when compared with the previous one. This demonstrates the impact of the new policy and staff training. We still have improvements to make (particularly at lunch time) but we are heading in the right direction.

### 4. My child has been bullied and the school dealt with the bullying quickly and effectively.

Not applicable	40
Strongly agree	1
Agree	9
Disagree	7
Strongly disagree	0



40 families had not experienced bullying which meant there were 17 who answered this question. We have not had 17 bullying incidents recorded over the last three years combined. All bullying incidents and accusations are reported to governors termly in the Headteacher's Report and on the annual safeguarding report to governors.

It is important to refer back to the definition of bullying: **"persistent behaviour by an individual or group with the intention of verbally, physically, or emotionally harming another person or group."**

That is not to say that bullying does not happen here. It can and it does in the same way it can occur in any school or workplace in the country. We take robust and immediate action where bullying accusations are made and have been successful in resolving cases that are brought to our attention. Refer to the school [Anti Bullying Policy](#) for guidance. If you feel that your child is being bullied, this is something that must be brought to our attention without delay.

5. The school makes me aware of what my child will learn during the year. (0 point)

Strongly agree	7
Agree	39
Disagree	7
Strongly disagree	1
Don't know	3



The point above has been addressed with the new format of curriculum newsletters which will go out each term. There is also a huge range of information on The Blog, Seesaw and newsletters each week.

## Emerging themes from the Free Text Responses

### More after school clubs for specific year groups

Last academic year, we offered **43 extra-curricular afterschool clubs. 20 of those clubs were free** and many others were subsidised.

Around 75% of the whole school cohort attended extra-curricular activity. 70% of our SEND cohort and disadvantaged pupils attended too. This is a very high number which is made possible because our staff give up so much of their own time in order to share their passions and provide these opportunities with no cost. Our extra-curricular offer is very strong. There is not a perfect balance between year groups, but we do the very best we can to make it as balanced as possible.

One carer did comment: *"The wide range of after school clubs on offer is good and a lot of time and effort obviously goes into planning these."*

## **Collection time congestion**

I am aware that the change back to the single gate has caused some queues at times and it can cause an inconvenience. I have met with the contractors to look at an accessibility ramp which will enable smoother access. **There is no scope to use the car park** (as previously mentioned in newsletters). The reduced flow does have a very important advantage. It means that we would much more easily be able to see if a child were trying to leave the site unaccompanied. Whilst our systems mean that this should not happen anyway, it is nonetheless, a reassuring insurance policy. I assure you that I will continue to reflect on how to make this run more smoothly, and I completely understand and agree with your point of view.

## **Communication with working parents**

Several families mentioned they would like improved communication with working families. We have worked hard to develop this area e.g weekly newsletter, calendar, website, texts/notifications and letters/emails. **The next step I am proposing is a focus group of working parents** meeting with us (virtually or in person) so that we can work together on this and take advice from you about what would improve things. Email the office ([admin@Applegarth.n-yorks.sch.uk](mailto:admin@Applegarth.n-yorks.sch.uk)) if you'd be interested in joining. Governors agreed that more forewarning of significant school events would be helpful so we will start to implement this immediately.

## **More information about what my child is doing in school and children's progress throughout the school year**

I agree with this point. Our main focus was rapidly improving the quality of education in school, and now that we have, we need to be more effective in regularly sharing this. We will discuss at the leadership level the best way for this to be done.

# Stick Me To Your Fridge!

The newsletter is sent out each week via email. It is also published on the school website and can be accessed via the link on your School Gateway App. **This is the main form of communication between home and school** and you should not miss out on anything if you keep up to date. Scan the QR code below to go straight to the newsletter page on the website. You don't need to wait for a message!



## Our Safeguarding Team

At school we have five members of staff and a governor who make up our Safeguarding Leadership Team. Mr Peoples is our Designated Safeguarding Lead (DSL); he is the lead person responsible for child protection and safeguarding issues. Mrs Hopkin, Mr Edwards and Mrs Crossley are our Deputy Designated Safeguarding Leads (Deputy DSLs); a deputy DSL supports the DSL in their role safeguarding and child protection. Mrs Jo Burnside is our Safeguarding Link Governor. The role of the Safeguarding Governor is to support the DSL as well as regularly review, ask questions and make suggestions about our safeguarding policies and procedures and to report back to the governing body.

**All staff at Applegarth know that safeguarding is EVERYONE'S responsibility. Find out more on our [Safeguarding Page](#).**

For information about **Online Safety**, visit our dedicated [webpage](#).

You can also report any concerns you have to our welfare email: [welfare@Applegarth.n-yorks.sch.uk](mailto:welfare@Applegarth.n-yorks.sch.uk)



# Mrs Mitchell's Last Day!

## **PLEASE READ CAREFULLY- WE HAVE TWO MRS MITCHELLS!!!**

Mrs Burrell is returning from maternity leave on Monday. We have arranged some handover time between the two teachers to allow for a smooth transition. Mrs Mitchell, who is currently teaching in Honeybees, will be leaving us next week. She has been an excellent member of the team and has gone above and beyond for the children in EYFS. She will be moving on to teach at another local school and we wish her the very best of luck for the future. Thank you, Mrs Mitchell 😊

## Contact Details

Please ensure your contact details are up-to-date in the school office. This includes your phone numbers, second and third contact numbers, your email and your home address.

If you think your details might be incorrect or out of date, please contact the school office as soon as possible. It is vital that we have the right information in order to keep pupils safe.

## PE Kits

With the weather changing and the school field a little more muddy, please ensure your child has a spare pair of trousers/joggers/shorts and shoes with them on PE days so that they are able to change if and when they get wet or muddy. Many thanks, Mrs Hughes.

# School Calendar

Event	Class/Phase	Venue	Date(s)/Time(s)
Engineering Competition	Meccano Club	Shildon Locomotion	Wednesday 19 <sup>th</sup> October
Harvest Festival	Whole School	All Saints Church FAMILIES WELCOME ***Volunteers to help us walk would be appreciated***	Thursday 20 <sup>th</sup> October 10:00am – 11:00am
Halloween Trail	Whole School	Applegarth Primary School	Friday 28 <sup>th</sup> October 4:00pm – 7:00pm
Bikeability	Year 6	Applegarth Primary School	Group 1 Friday 4 <sup>th</sup> November Group 2 Monday 7 <sup>th</sup> November Group 3 Wednesday 9 <sup>th</sup> November Group 4 Friday 11 <sup>th</sup> November
Individual and sibling photos	Whole School	Applegarth Primary School	Thursday 10 <sup>th</sup> November
Bedtime Stories	Whole School	Applegarth Primary School	Thursday 10 <sup>th</sup> November 4:30pm – 5:30pm
Christmas Fair	Whole School	Applegarth Primary School	Friday 2 <sup>nd</sup> December 3:30pm – 5:00pm
Christmas Lunch	Whole School	Applegarth Primary School	Wednesday 7 <sup>th</sup> December
Christmas Jumper Day	Whole School	Applegarth Primary School	Friday 9 <sup>th</sup> December
Key Stage One Nativity	Years 1 and 2	Applegarth Primary School	Monday 5 <sup>th</sup> December 6:00pm – 7:30pm  Tuesday 6 <sup>th</sup> December 10:00am – 11:15am
Reception Nativity	Reception	Methodist Church TBC	Tuesday 13 <sup>th</sup> December 10:00am – 11:00am

# What Parents & Carers Need to Know about

# FIFA 23

FIFA 23, like its many predecessors, is a massively popular football simulator featuring lifelike recreations of thousands of real-world players, drawn from teams around the globe. While the gameplay is subtly improved year on year, the publisher EA Sports' tweaks tend to focus on FIFA Ultimate Team mode, which can tempt gamers of all ages to spend real money recruiting better players for their side. With each new release of FIFA comes a host of new players to unlock – meaning that youngsters can feel pressured to keep buying to compete with their friends.

AGE RATING

PEGI  
3

## WHAT ARE THE RISKS?

### RELEASE RAZZAMATAZZ

FIFA 23 will be the last in the blockbuster series, before EA goes solo with its own football title next season. This 'end of an era' vibe – coupled with a huge advertising budget making the new release almost impossible to miss – will elevate FIFA 23 into even more of a 'must have' for football-mad young gamers, no matter how minor the updates are on last year's version.

### AGE-INAPPROPRIATE CHAT

Based on a popular sport which appeals to people of all ages, the FIFA franchise draws a huge audience of both children and adults. Communication is a key element, with many players enjoying in-game audio chat via headsets. With the mixed age range of players and a lack of regulation, however, chats can often turn offensive or toxic – especially in the heat of competitive matches.

### IN-GAME PROMOTIONS

Unless precautions are taken, dedicated FIFA fans can spend significant sums when attempting to improve their Ultimate Team. Most top-level players can be unlocked by simply participating in matches, but some sought-after stars can be obtained more quickly in limited-time promotions which cost a large amount of FIFA points (the in-game currency, often paid for with real money).

### CIRCLING SCAMMERS

The popularity of FIFA Ultimate Team (FUT) mode has led to online scammers convincing many impressionable gamers to pay real money for non-existent FUT coins and player cards, or directing unwary FIFA fans to phishing sites. If your child gives these individuals their login details, the scammers can access not only their carefully built team but potentially your payment information.

### ADDICTIVE NATURE

One match on FIFA (usually around 15 minutes, but often lengthened by extra time and penalties) almost invariably leads to another. It can be a powerful temptation for young players, regardless of unfinished homework or an approaching bedtime. If the "just one more game" mindset starts to impact a child's daily routine, it could be a sign of gaming disorder, a recognised mental health issue.

### GAMBLING-ADJACENT BEHAVIOUR

Ultimate Team has become a major feature in FIFA due to the revenues it generates. It can also be addictive, with children striving to earn coins and level up while swapping, selling and buying players. Spending FUT coins to open a player pack (which many experts have likened to gambling) is designed to be an exciting act – with bright lights, fanfare and attention-grabbing prizes.

## Advice for Parents & Carers

### BE SELECTIVE WITH CHATS

It's enormous fun for FIFA players to chat online with friends, even as their teams do battle in the game. It's probably the safest idea, though, to restrict contact with strangers. By turning off voice chat in FIFA and allowing cross-party chat in their device's settings, your child can speak to people who are already on their friends list but won't be able to talk to (or hear) strangers online.

### STAY ALERT FOR SCAMS

There are some key things to remember about potential FIFA scams. Firstly, EA never contacts users via any method other than emails to the account holder (which may well be you). Neither will they ever ask for a player's username or password outside the game itself. EA's terms and conditions outlaw the buying of FUT coins, so anyone selling them should be treated as suspicious.

### CONTROL SPENDING

If your child plays Ultimate Team mode on FIFA, ensure their account isn't linked to your payment methods – so they'll need your permission to make in-game purchases. Alternatively, you could use parental controls to limit spending – or set up a pre-paid 'allowance'. When excitedly clicking options on screen, it's easy for a young person to forget the real-world repercussions of online purchases.

### AVOID 'EXTRA TIME'

If your child's spending a lot of time on FIFA 23 and seems less enthusiastic about other activities in their life, you could consider restricting how long they can play for each day with the parental controls in their device's settings. Even if they're not playing on their console or computer, there's a FIFA companion app for smartphones – but that can be limited through parental controls, too.

### Meet Our Expert

Lloyd Coombes is Games Editor of technology and entertainment website Dexerto and has been working in the gaming media for three years. A long-time fan of the FIFA franchise, he is also a parent and therefore a keen advocate of online safety. Writing mainly about tech and fitness, his articles have also been published on influential sites including IGN and TechRadar, among others.



10



National Online Safety®

#WakeUpWednesday



ALL SAINTS EVE  
IN THE PARK  
31<sup>ST</sup> OCT



5-7PM BULLAMOOR PARK  
FREE EVENT OPEN TO EVERYONE

---

RIDE THE RODEO BULL, ENJOY A  
BBQ AND PLAY FUN GAMES

---

SEE YOU THERE!

NewLife  
BAPTIST CHURCH

1 of 2

James Lorraine Football for 4-12 year olds

# OCTOBER HALF TERM HOLIDAY CAMP



NOW  
AVAILABLE  
TO BOOK  
YOUR  
CHILD'S  
PLACE!!

Tuesday 25<sup>th</sup>, Wednesday 26<sup>th</sup>  
and Thursday 27<sup>th</sup> October

Brompton Primary School DL6 2RQ

4 - 6 years old 8.45am - 2.45pm

7 - 9 years old 9am - 3pm

9 - 13 years old 9.15am - 3.15pm

PRIZES  
TO BE WON  
EVERY DAY  
& PUMPKIN  
COMPETITION  
ON THE LAST  
DAY



## Cost

Prices are reduced if you book days in the same week.

£18 per child per day

£34 for 2 days

£48 for 3 days

## Your child will need...

playing kit and boots to suit the weather, plenty to drink and a packed lunch.

Please note all sessions will be outside. Toilets are available in the school.

## Cancellations

If any days of the camp are cancelled due to adverse weather conditions or COVID a credit will be added to your account for future camps and sessions.

## Payments

To make a booking please use the booking system at [james-lofthouse-football.class4kids.co.uk/camp/6](https://james-lofthouse-football.class4kids.co.uk/camp/6)

If you book for 2 days please message me on 07908 199994 for a discount code.



For more information call James Lofthouse on 07908 199994 or email [j.lofthouse@jameslofthousefootball.com](mailto:j.lofthouse@jameslofthousefootball.com)

You can also message direct on Facebook - booking is essential and on a first come first served basis



Applegarth parents, carers and grandparents,



# WE NEED YOUR HELP!

As part of our learning in Heritage Week this year, we will be finding out why HMS Hood is so special to Applegarth Primary School. It is on our crest and we know that school pupils wrote letters to the sailors before it was sadly sunk in 1941.

Do you have any information that can help us? A personal recount, a copy of a letter received or any other information about this incredible battleship would be fantastic, used and perused and MUCH appreciated!

Please let your child's class teacher (or Mrs Cross) know, either in person or via Seesaw! Thank you, Mrs Cross

**EMPIRE**  
CINEMAS

# HAPPY HALLOWEEN

**SATURDAY 29<sup>TH</sup> OCTOBER**

**FANCY DRESS COMPETITION & SPOOKY  
FUN & GAMES IN THE FOYER FROM 10am**

Followed by a special screening at 12 noon of

Disney  
**HOCUS POCUS**

**BOOK NOW**  
ALL TICKETS  
**£6.50\***



**EmpireCinemas.co.uk**

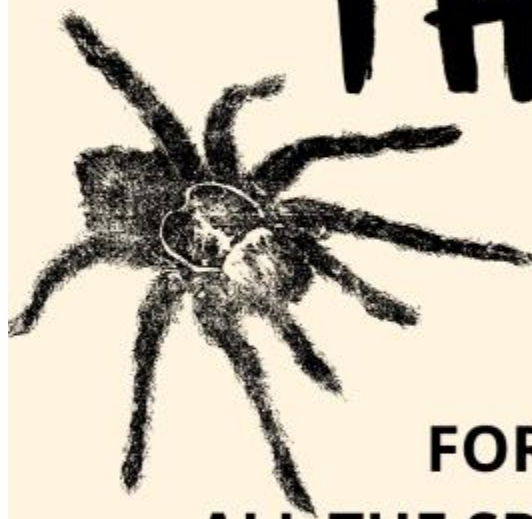




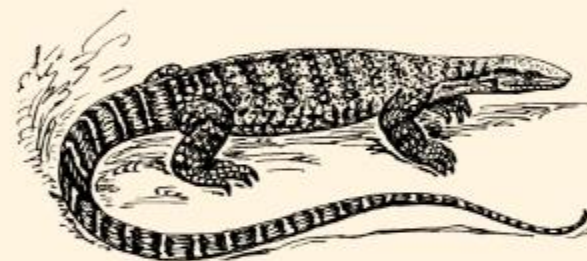
# **HALLOWEEN**

## **SPECIAL MEET**

### **THE ANIMALS!**



**30.10.2022**



**FOR THOSE WHO LIKE A THRILL!  
ALL THE SPOOKY, UNUSUAL, DISGUSTING AND  
FRIGHTENING ANIMALS COMING OUT TO PLAY**



**-£4 PER PERSON-  
-CHILDREN TEENS AND ADULTS  
WELCOME!-**

**AQUATIC FINATIC  
THIRSK ROAD A168  
NORTHALLEROTN  
DL6 3SB**



2 DECEMBER 2022  
TO  
8 JANUARY 2023

THE GEORGIAN THEATRE ROYAL  
RICHMOND, NORTH YORKSHIRE

Pinocchio

BOOK ONLINE: [www.georgiantheatreroyal.co.uk](http://www.georgiantheatreroyal.co.uk)

BOX OFFICE  
01748 825252



## CHILDREN'S ARTS & CRAFTS COMPETITION

**Lots of amazing prizes to be won!**

The Georgian Theatre Royal is running a *Pinocchio* children's arts and crafts competition. There are four competition categories:

1. Entries aged 6 and under
2. Entries aged 7 and over
3. The Director's Prize for the most imaginative entry
4. The best coloured-in poster or 2D artwork.

**1st prize in each category** – a family ticket (up to 2 adults and 2 children) to see our legendary pantomime.

**Runners up** – soft toys, selection boxes and other festive goodies!

**You can do one or more of the following**

1. Make a string, hand or finger puppet. This can be Pinocchio himself or one of the other characters in the story, such as the Blue Fairy or the Fox.
2. Create some fishy art, using any materials you like from paper plates and tissue paper to egg boxes and ribbons. It needn't just be fish. Any sea creatures are welcome, including octopus, mermaids, sea turtles and sharks!
3. Finally, why not colour in a pantomime poster or create your own picture? Templates can be downloaded from our website at: [www.georgiantheatreroyal.co.uk](http://www.georgiantheatreroyal.co.uk)



## HOW TO ENTER

Please drop off your artwork to: The Georgian Theatre Royal (Victoria Road, Richmond, DL10 4DW) by **Saturday 26 November**. All entries should be marked clearly with the child's name, age and contact details.

We would love to use your artwork to decorate the Theatre during the pantomime. However, if you would like to pick it up straight after the competition, please indicate this on your entry.